

PREASSEMBLY OF OPERATING TRAYS IN OPERATING THEATERS :

AN INNOVATING AND STRUCTURING CONCEPT

Dr Christine DENIS

Pharmacist

CSSD

University Hospital LILLE , FRANCE

New CSSD « STERINORD » opened since november 2013



Key data:

- 2600 m²
- 1200 operating trays / day
- 80 operators
- Full automatization
- Full traceability
- Quality management
- Risk management





A new CSSD is not just a new building....

- Physical distance between OT and CSSD
- New organizations
- Challenge
- Need to review the WHOLE sterilization process (in CSSD and in OT)

Goals:

- To reach a global high level of performance
- It means :
 - High level of performance at each step
 - No weak link
 - Secure all the interfaces





Means to achieve the goals:

- Industrial model
- Quality management
- Risk management
- Education
- Traceability
-

Focus on assembly



ASSEMBLY in CSSD:

A hard job!!!

- Need skills (long education)
- Conviction = Nobody except OT nurses can do it properly
- OT nurses come in CSSD to do it themselves,
- Issues:
 - Too much people in CSSD
 - No reference document
 - Responsibilities?

ASSEMBLY in CSSD without the participation of OR nurses

- Reference documents:
 - For each kind of tray
 - Precision :
 - size of instruments...
 - Possibilities of replacement
 - photos
- Education

ASSEMBLY in CSSD without the participation of OR nurses

OT operators don't make the job easy....

- Compositions of trays are always changing
- Missing instruments
- Mix up between several trays used during the same operation
- Single instruments in pouches jumbled with instruments of the trays.....



ASSEMBLY in CSSD:

- And , finally, OT operators shift always the blame onto CSSD operators....
- ASSEMBLY = most delicate step in CSSD
- source of conflict OT/CSSD

To solve the problem:

Brainstorming CSSD /OT



- ➔ Requirements of each part
- ➔ Decisions



OT's Requirements:

- Receive complete trays
- Keep their trays's knowledges
- Get prooves of what is sending from OT to CSSD and vice versa

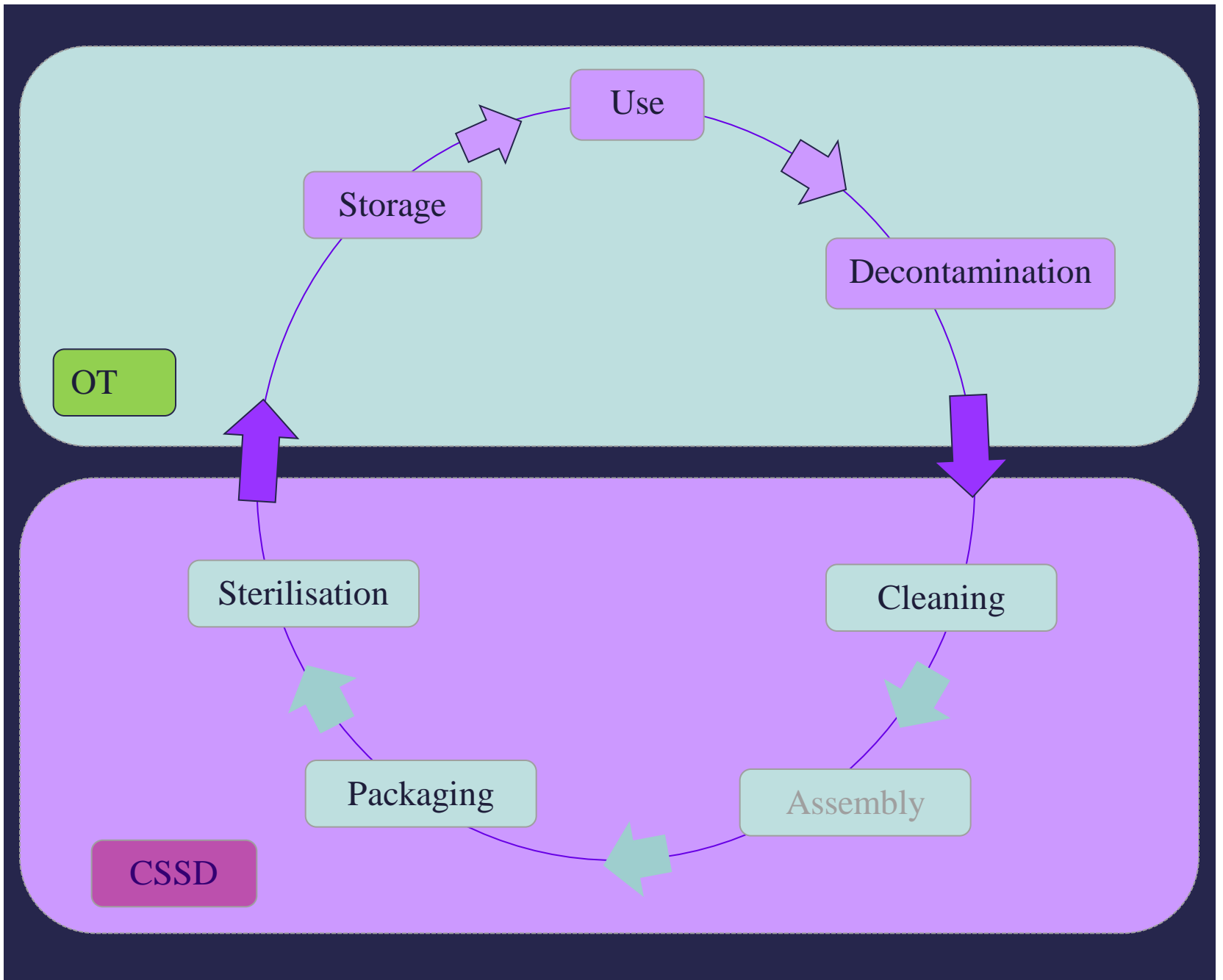


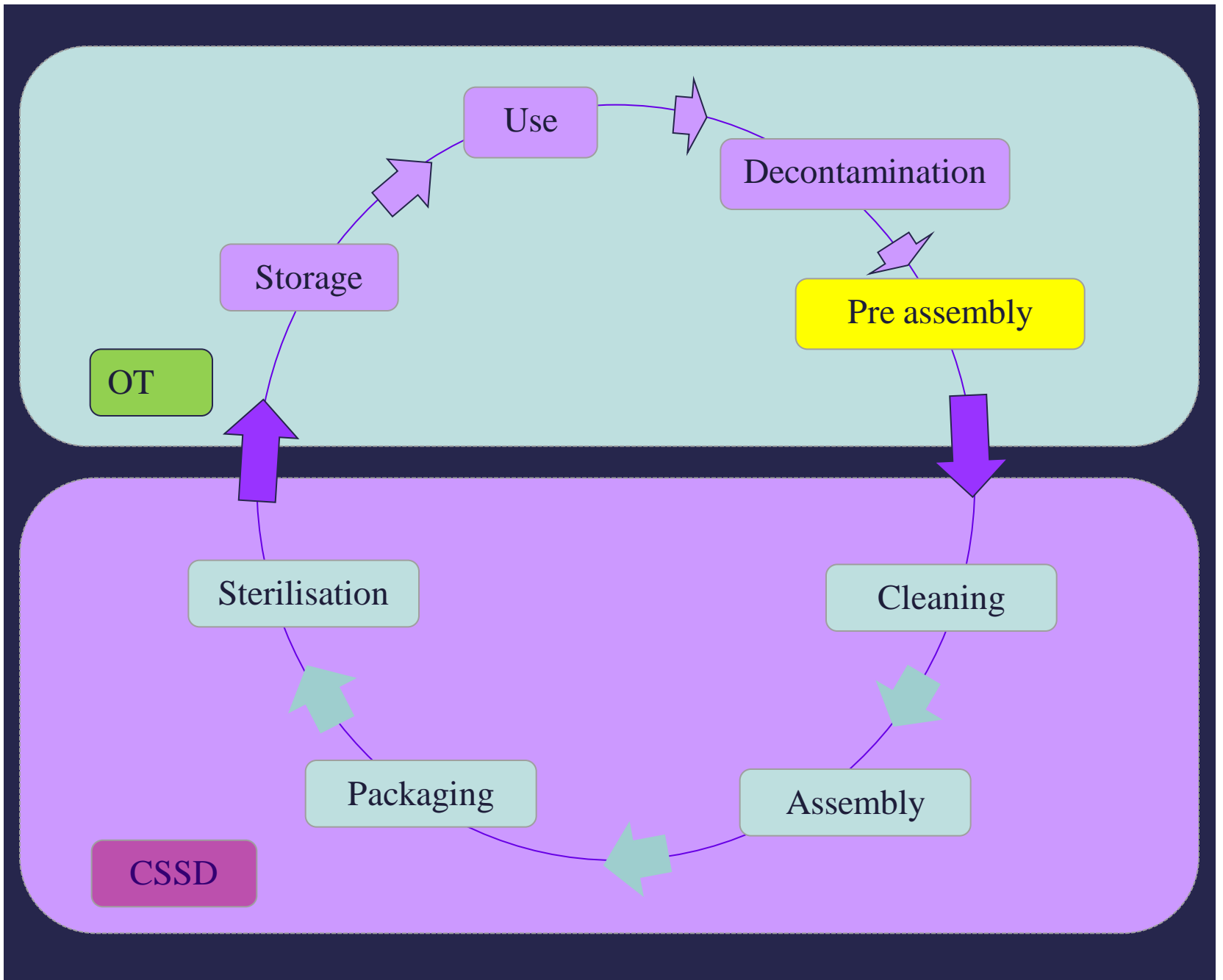
CSSD 's requirements:

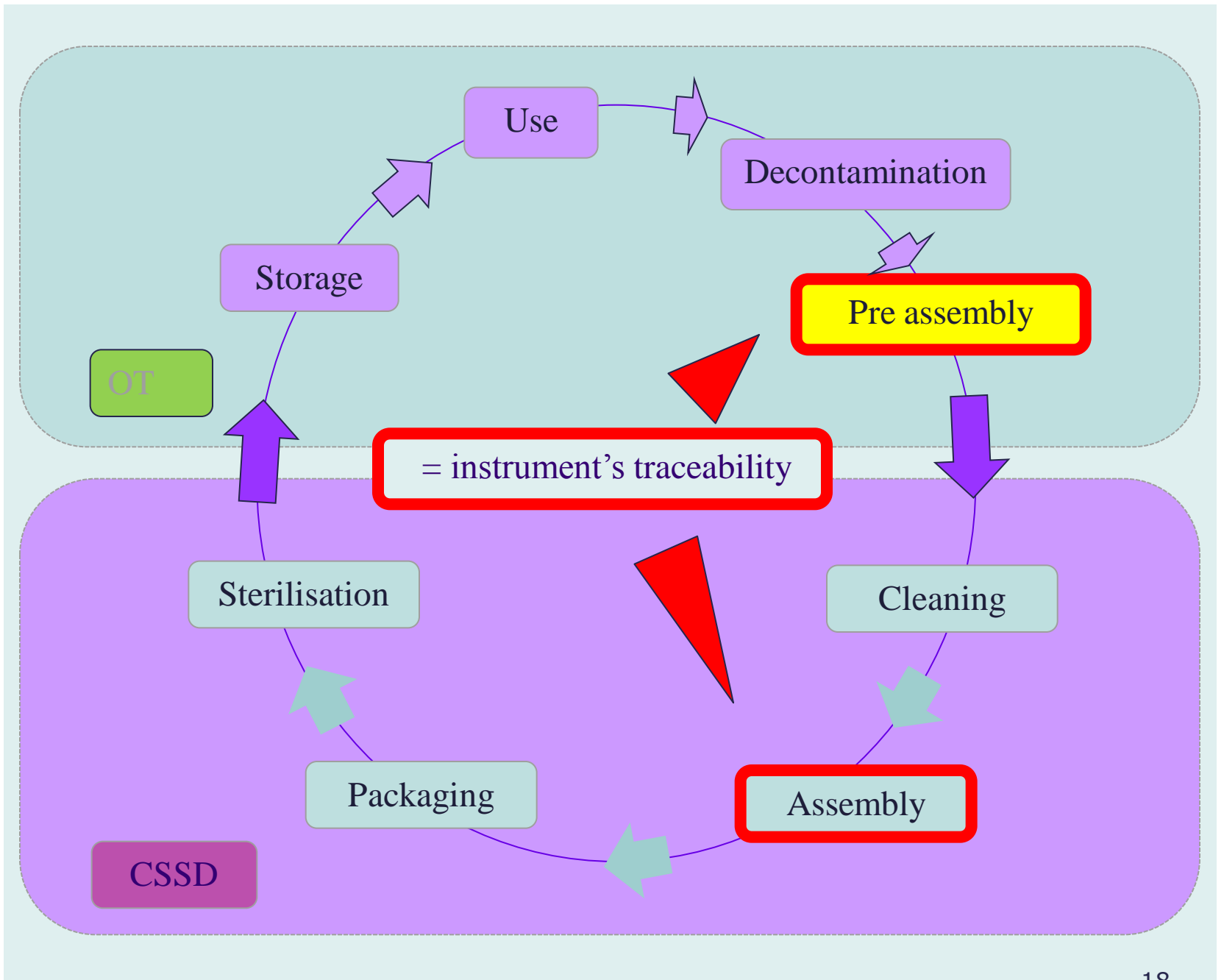
- To assembly without help of OT in CSSD
- Get prooves of what is sending from OT to CSSD and vice versa
- Make OT operators aware of their responsibilities for their part of the process
- To receive sorted trays from OT

Decisions:

- Preassembly of trays in OT before sending them to CSSD
- Monitored by IT system of traceability







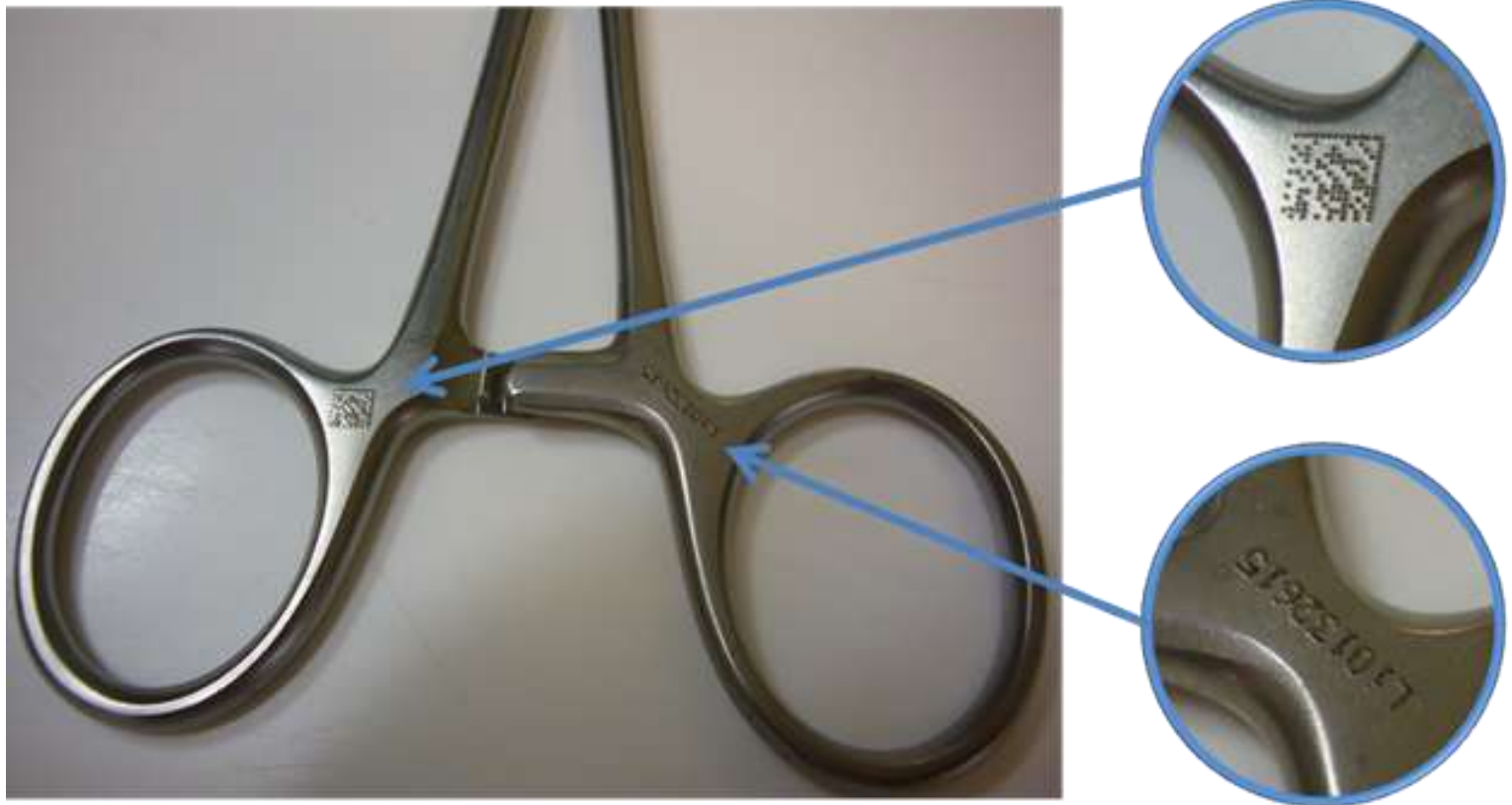


How does it work??? (1)

Pre-requisites :

- identification of each instrument (our choice is Datamatrix made by ourselves with drill machine)
- Unique code
- setting up of a data base with all instruments and trays' compositions.

Unique Datamatrix code on each instrument





How does it work??? (2)

- The presassembly of the trays in the OT is equal to an order for the CSSD and provides the proof that the instruments were really in the tray.
- Missing instruments are registered
- The OT nurse has the possibility to replace missing instruments by another kind of instrument,


How does it work??? (3)

- The operators in CSSD have to assemble according to the preassembly in OT and no more according to a reference document which is often out of date.




Qte Th	Article	Ref/Série	Qté R	Commentaire
1	CABLE ELECTRIQUE HALL	REF M62057	1	
	-> NE PAS SOUFFLER - NE PAS LUBRIFIER			
	PIECE A MAIN ELECTRIQUE HALL	REF PRO6100	1	
	-> NE PAS SOUFFLER - NE PAS LUBRIFIER			
1	SCIE SAGITTALE STYLO ELECTRIQUE HALL	REF 6020-022	1	
	-> NE PAS SOUFFLER - NE PAS LUBRIFIER			
	-> VERIFIER LA PRESENCE DU BOUTON POUSSOIR NOIR MARCHE ARRET			
	-> MOBILISER LA TETE DE FIXATION DE LA LAME POUR VERIFIER LA PROPRETE			
	LES ELEMENTS SUIVANTS SONT A TESTER SUR LA PIECE A MAIN			
1	GUIDE FIL ELECTRIQUE HALL DIAM 0,7 MM A 1,5 MM	REF PRO6128	1	
	-> A SOUFFLER			
1	GUIDE TIGE ELECTRIQUE HALL DIAM 1,8 MM A 4 MM	REF PRO6240	1	
	-> A SOUFFLER			
1	ACCESSOIRE A0 PETIT FORMAT ELECTRIQUE HALL	REF PRO2038	1	
1	MANDRIN JACOB ELECTRIQUE HALL DIAM 4 MM	REF PRO2030	1	
	-> A SOUFFLER			

MOTEUR ELECTRIQUE POWERPRO SCIE STYLO



CABLE ELECTRIQUE HALL



Quantité

Action

Façonner



Histo

Vers



CUSA EXCEL LAPAROTOMIE 2: (4/4)

...	...	Qté	Th	Article
	<input checked="" type="checkbox"/>	1		PIECE A MAIN CUSA 36 KHZ DROIT
	<input checked="" type="checkbox"/>	1		BANC MONTAGE EXCELL POUR PIECE A MAIN 36 KHZ
	<input type="checkbox"/>	1		BOITE A BIJOUX
	<input type="checkbox"/>	1		--> CONE CEM PIECE A MAIN CUSA 36 KHZ

ATTENTION : LA PIECE A MAIN NE DOIT PAS COMPORTER DE JOINT, SI PI
JOINTS (BLEU OU BLANC) LES OTER ET LES JETER A LA POUBELLE



Results:

- Implemented in 60% of Operating departments
- 100% are satisfied and don't want to step back,
- Improvement :
 - high in OD with a lack of organization



Evaluation: The benefits for CSSD

- Facilitate the task of assembly even for less trained operators
- Time saving
- Reduction of the negative sentiment to make trays with missing instruments
- Reduction of the claims from OT
- Risk control



Evaluation: The benefits for OD

- Maintaining the level of awareness
- Still trained to assembly , still know what their trays are made of
- Optimization of the trays ` composition
- Optimization of instruments ` management (loss immediatly noticed)
- Evidence of what has been sent to CSSD
- Risk control

Conclusion:

- This organization allows us to meet the new challenge of the CSSD: transfer of the assembly task to non OT operators in a context of distance between CSSD and OT.
- In our experience, the skills of OT operators are used to great effect during the preassembly without needing to help anymore in CSSD.
- The responsibilities are clearly defined by the two parts.
- Studies in progress to evaluate the system



16th
**World
Sterilization
Congress**

**& Annual
conference of AFS**

7-10 OCTOBER 2015

Lille, France

www.wfhss-lille2015.com

ORGANIZED BY
WFHSS

AFS

Lille welcomes WFHSS 2015!

WHEN?

7-10 October 2015

WHERE?

**Lille Grand Palais
Conference Center**

.....**WFHSS**



Thank you for your attention!!



christine.denis@chru-lille.fr